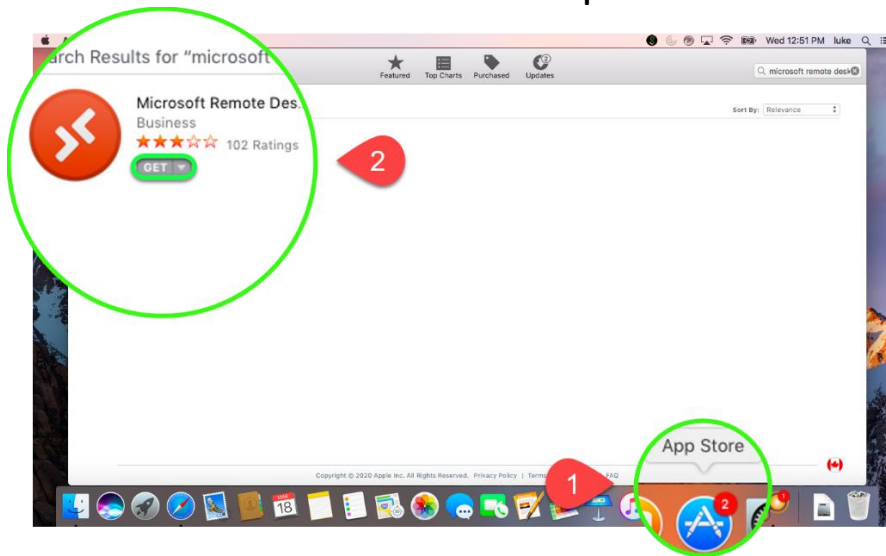


Before you begin:

1. Navigate to the remote lab portal, [and copy the Machine ID](#)
2. Make sure you [connect your home computer to York's VPN service](#)

Get Started:

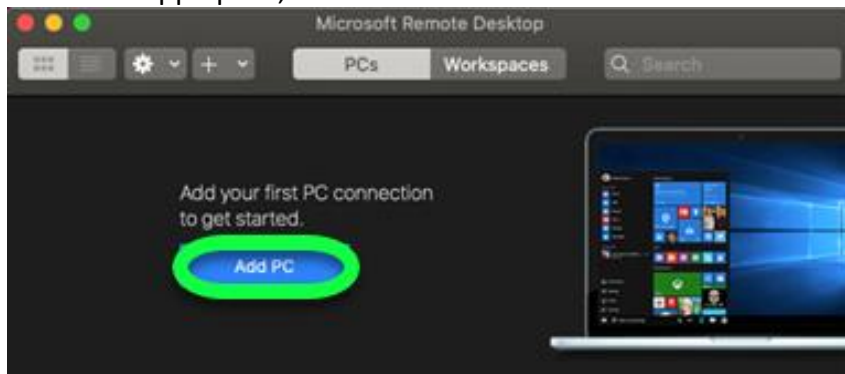
1. Open the App Store
2. Search and install **Microsoft Remote Desktop 10**



3. Once the installation is complete, launch the **Microsoft Remote Desktop**

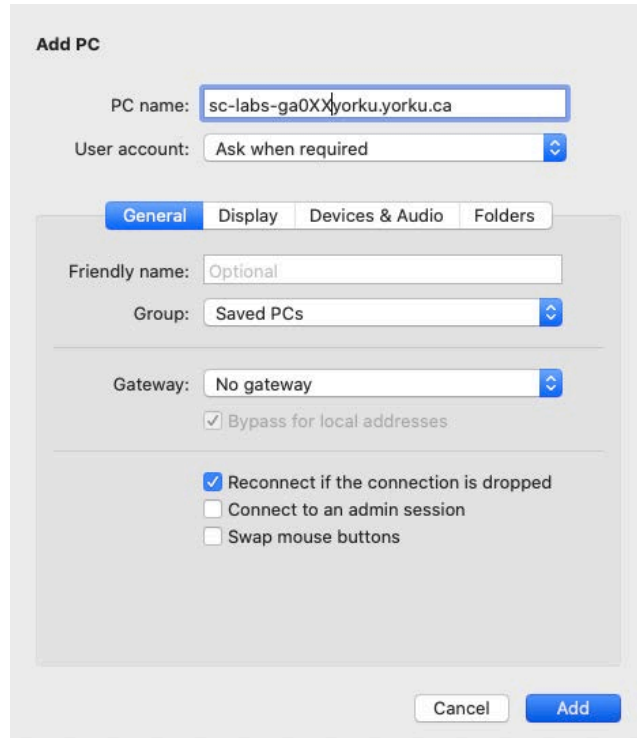


4. When the app opens, click **Add PC**



Connect to your Work Computer Remotely

5. On the “Add PC” screen, take your work computer's name and add "yorku.yorku.ca" to it, then enter that into the **PC Name** field.
 - a. For example, if your work computer name is **sc-lab-ga04**, the value you'd enter into the **PC Name** field would be **sc-labs-ga04.yorku.yorku.ca**



Add PC

PC name:

User account:

General | Display | Devices & Audio | Folders

Friendly name:

Group:

Gateway:

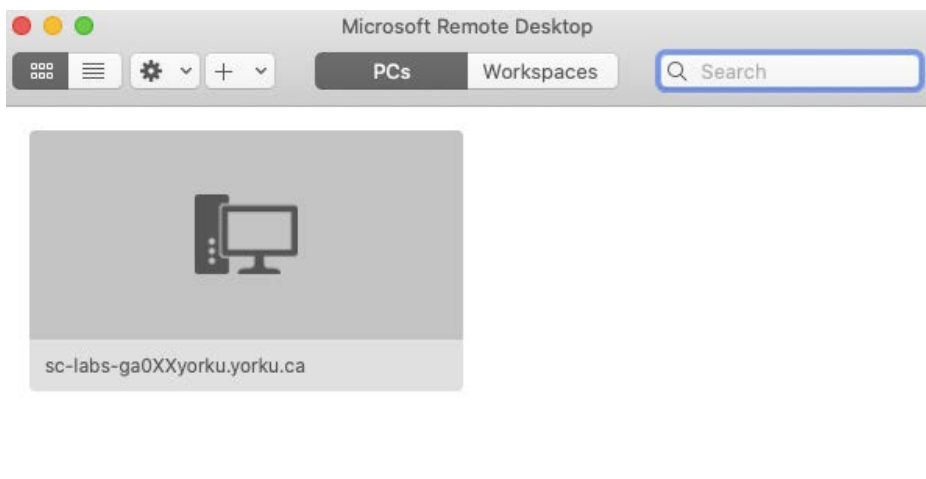
Bypass for local addresses

Reconnect if the connection is dropped

Connect to an admin session

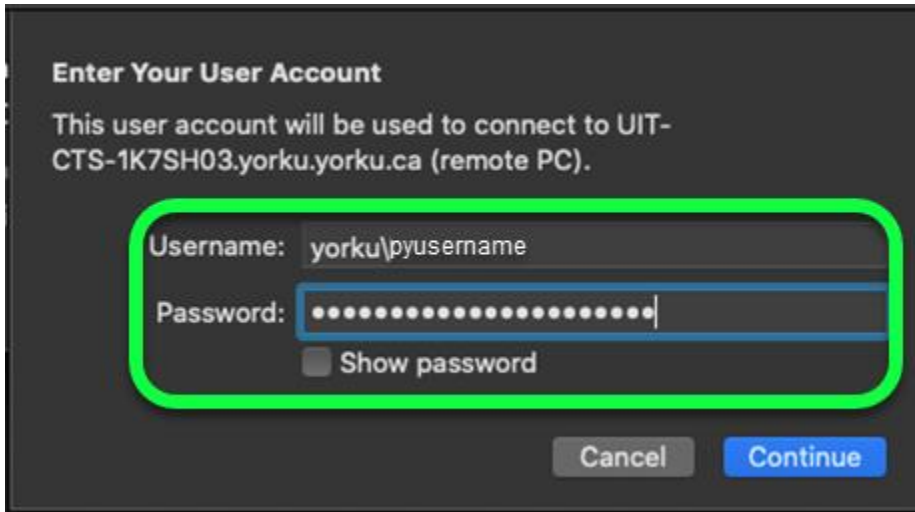
Swap mouse buttons

6. Click **Add**
7. Your computer will now appear as an icon in the app. Double click it connect



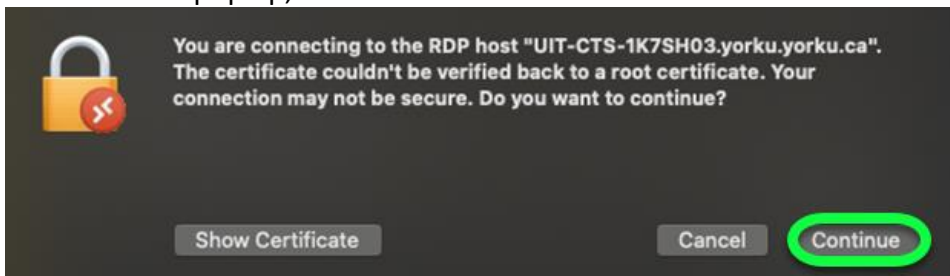
Connect to your Work Computer Remotely

8. In the username field, type: **yorku**[your Passport York username].
 - a. Example: Jon Snow would type: **yorku\jsnow**



9. Click **Continue**

10. A window will pop up, click **Continue**



Your Mac is now connected to your work computer!